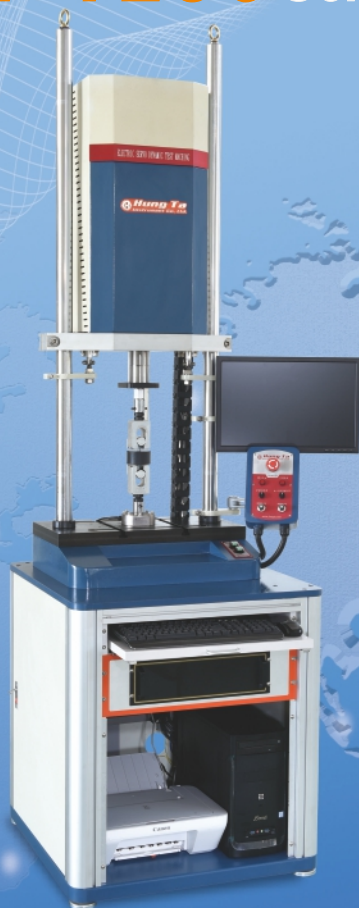


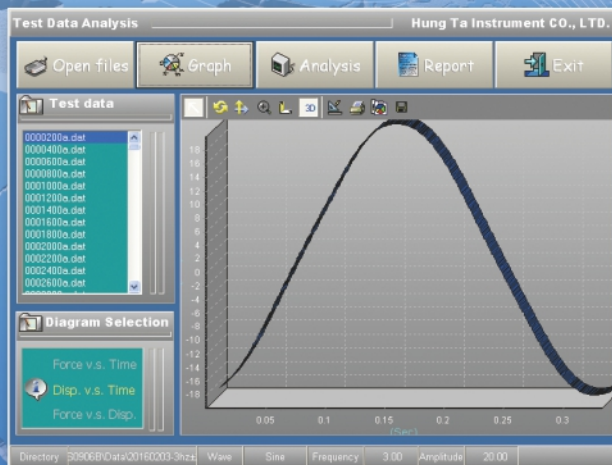
# HT-1236 Series

## Dynamic Testing Machine



This machine applies electro dynamics to power train, suitable for productions and raw material for executing test in dynamic, static, tensile, compression, torsion, conform with ergonomics.

Machines are easily installation and operation, be the best dynamic machine for selection for R&D fields.



HT-1236	E100			ET100			E500			E1000				
	V3	V6	V10	V3	V6	V10	V3	V6	V10	V3	V6	V10		
Dynamic force (N)	±1000			±1000			±5000			±10000				
Static force (N)	±750			±750			±3700			±7500				
Max torque (N-m)				±50										
Max torsion angle				±360°										
Stroke of dynamic actuator (mm)	±50			±50			±50			±50				
Dynamic performance (Hz)							Max : 50							
Loading accuracy							±1%							
Encoder (mm)							Max : 100, Resolution : 0.002							
Max line speed rate V (m/s)	0.3	0.6	1.0	0.3	0.6	1.0	0.3	0.6	1.0	0.3	0.6	1.0		
Crosshead upward & downward system	Driver by electron-system, quick adjustment													
Crosshead fasten system fasten system	Manual													
Control and data collection system	Computer			PC one set										
	Controller			HUNG TA interface										
	Software			Dynamic software, one set, UTM static software one set										
Dynamic system: electric servo cylinder	Servo motor			Servo motor & Servo driver control apparatus										
	Power consumption			1.0 kVA			1.0 kVA			1.0 kVA			2.0 kVA	
Dimension (WxDxH)	Main machine (mm)			About 752 x 750 x 1800										
	Weght (kg)			About 320 kg			About 320 kg			About 320 kg			About 330 kg	
Safety protection	Overload protection, Leakage protection, Emergency switch, Limiter protection													
Standard accessory	Tool Kit, Operation manual, Calibration report, Warranty, one set of each above													
Power	3ø/ 220V / 50 / 60 Hz													
Optional accessory	Grips : Designs base on the specimen dimension and need to create													
	Protection guard, customer provide the specimens.													

1. Specification if change, not inform individually.

2. Using the compressed spring from Hung Ta to inspection to be determined by the testing term frequency, amplitude, material conditions and surroundings.



**Hung Ta**  
Instrument Co., Ltd.  
advanced material and component testing instrumentation

### Headquarters & Factory

No. 20, Jingke Central Rd. Nantun Dist., 40852 Taichung City, Taiwan  
TEL : +886-4-23590108  
FAX : +886-4-23593110, 23588599  
Int'l hotline : + 886-933-208585  
E-mail : info@hungta.com

Website :  
[www.hungta.com](http://www.hungta.com)  
[www.hungta.com.tw](http://www.hungta.com.tw)  
[www.hungta.com.cn](http://www.hungta.com.cn)